

# MOVOFILMS

## Lightweight Cage with Rod Support

MF-G34-LCRS

INSTRUCTION MANUAL



## IN THE BOX

Please inspect the contents of your shipped package to ensure you have received all that is pictured and listed below. The grey foam shipping /storage container has been especially designed to protect your purchase while in transit and is a good place to keep your Movofilms Lightweight Cage when not in use.

## KIT INCLUDES

- Camera Cage
- 15mm Base Adapter
- Top Handle
- 2x 300 mm Female Rods



Please use following sequence of pictures and text in order they appear to set up your new Movofilms Lightweight Cage. Technical assistance is available by contacting your sales representative.

- Mount your camera into cage and tighten it with help of screw driver.



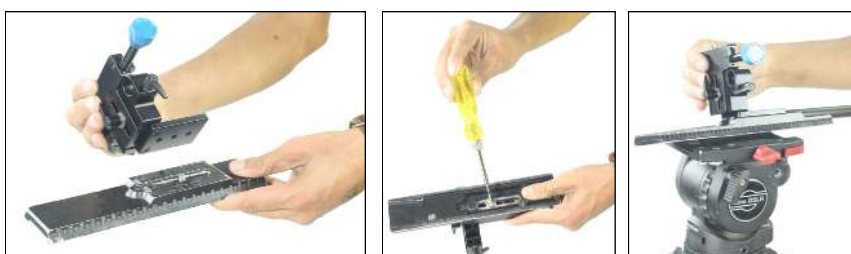
- Now slide in top handle to cage top and tighten it with provided knob to ensure slip free connection.



- Insert your Microphone set up (**Not Included**) onto the cage and tighten it properly.



- Now attach 15mm Base Adapter to tripod plate and tighten with help of screw driver. Mount tripod plate on tripod and tighten to secure.



- Loosen the knob, slide-in the cage setup on Base adapter and tighten the knob to secure.



- Loosen the bolt with help of Allen key, adjust the height of the camera set up and after adjusting tighten the bolt.



- Loosen the side knobs to insert 2x 300mm Female rods into rod adapter and tighten with provided knobs to secure it properly.



**YOUR MOVOFILMS LIGHTWEIGHT CAGE WITH ROD SUPPORT FOR  
PANASONIC LUMIX GH3/GH4  
ALL DRESSED UP AND GOOD TO GO.**



**(SHOWN WITH OPTIONAL ACCESSORIES)**

## WARRANTY

We offer a limited time warranty for our products. For Mechanical products we provide a 6 month warranty & for electronic products we provide a 3 month warranty from the date of purchase.

We will repair or replace your product, free of charge, in the event of a defect in materials or craftsmanship obtained during normal use or handling based on the user manual. Please note that we will not cover any shipping costs for returning the product to us. If any VAT or import duties are applied to the return, we will also charge these costs to the customer.

The warranty does not include, by the way of example, damage caused by products that we donot supply or from mishandling in transit, accident, misuse, neglect, lack of care of the product , or service by anyone other than our company.

We are not liable for incidental or consequential damages resulting from the use of the unit or occurring due to any breach of this warranty.

Replacement parts of the product will be provided at nominal cost (covering the cost price of the replacement parts only) to the customers after the Warranty Period has expired. We will cover the complete cost of sending replacement parts within the warranty period. After that, Nominal cost of the product & Actual shipping cost will be charged.

Do not send the unit to us without first getting a response and getting the approval to send back the item.

In case of any kind of dissatisfaction, we urge you to [Contact us](#) immediately and we shall do our best to help you out.

For any other assistance you can reach us via email.

**MOVOFILMS**